



ROYAL
COLLEGE
OF MUSIC
London

Royal College of Music Museum

My Opera Activity Book



What is opera?

Have you ever seen an opera? An opera is a play in which the story is told in song. That means all the lines are sung instead of spoken!



Operas almost always have an orchestra to accompany the singing. The music the orchestra plays helps to tell the story. Lots of famous composers have written operas, like Mozart and Handel.

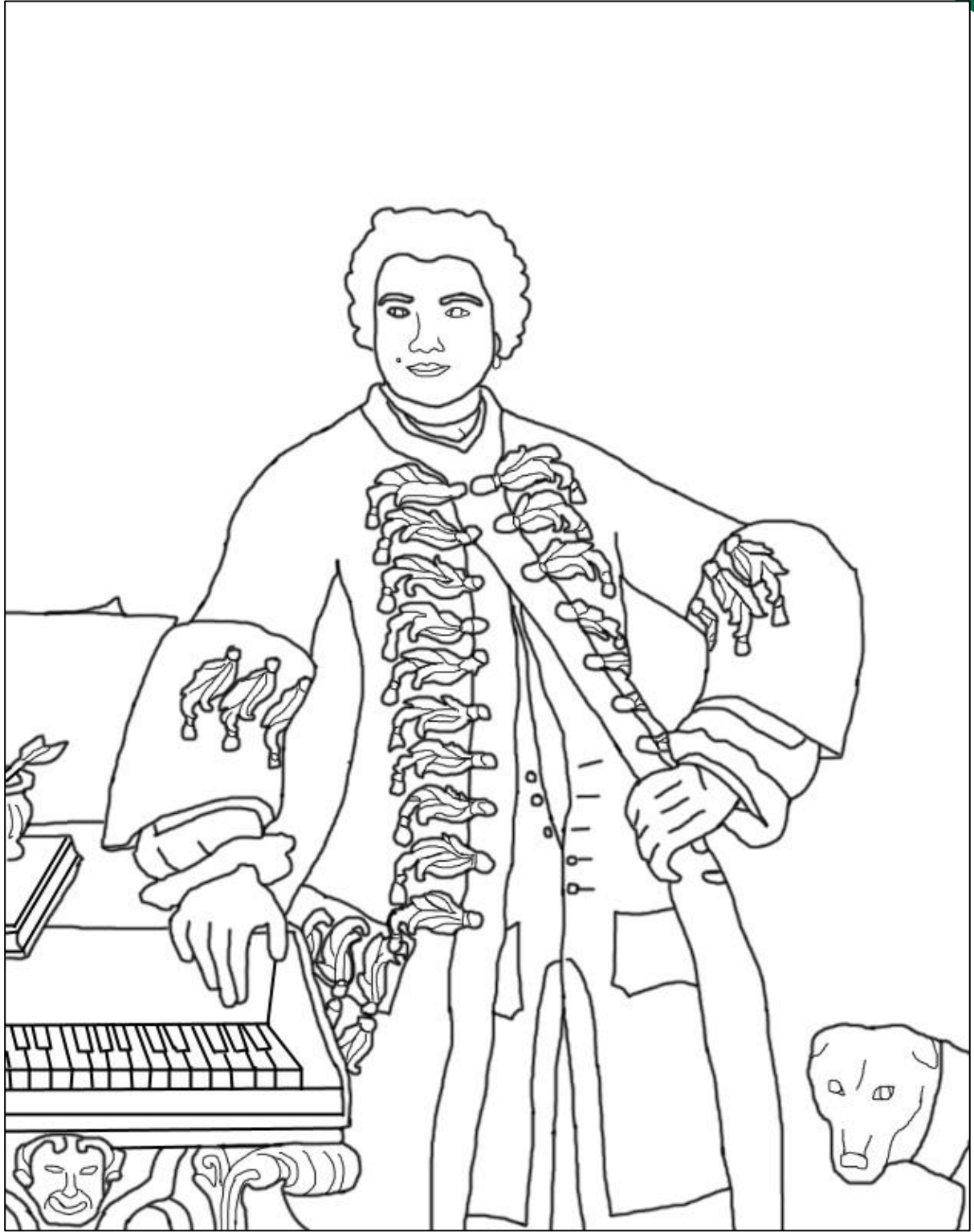
Let's find out more about opera!

Superstar

This is Italian operatic superstar Carlo Broschi, known by his stage name Farinelli. He was famous across Europe in the 1700s - that's 300 years ago! Below is the most famous portrait of Farinelli.

Colour in your own version on the next page!





Find the word

Solution at end of booklet.

O X L X Q S H O O B K P C M X
D T W N D Y N C T Y P L F W G
C M L H I A Z I T B P A Z X N
W A U A R R D K E S Y A S D V
P Q D P R T A C R A S B Y X F
A P O E N T U B B O W A P P G
C S G Z N M N J I P N G B K X
T O P L Q Z C O L B A I R A A
N P C T D V A C C M Y T K P V
J E I G C B F J W Q E X G S I
W R Z P U L K J S N K P T A D
G A A W U U A I O N P S E I M
K E F L A F U R Q T B F V J G
E U D F M H Q Z O C I R J I S
M P C K W V I B R A T O A C W

ARIA
BASS
CADENZA
CONTRALTO
DIVA

LIBRETTO
OPERA
SOPRANO
TENOR
VIBRATO

Operatic glossary

ARIA - a song for a solo singer

BASS - the lowest male singing voice

CADENZA - an improvised passage sung by a solo singer

CONTRALTO - the lowest female voice

DIVA - a female opera star, also called a 'prima donna' which means 'first lady' in Italian.

LIBRETTO - the text of an opera

OPERA - a play which is sung instead of spoken

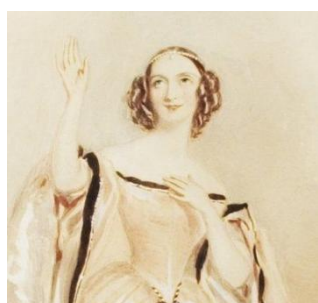
SOPRANO - the highest female singing voice

TENOR - the highest male singing voice

VIBRATO - a vibrating change in pitch

Let's match

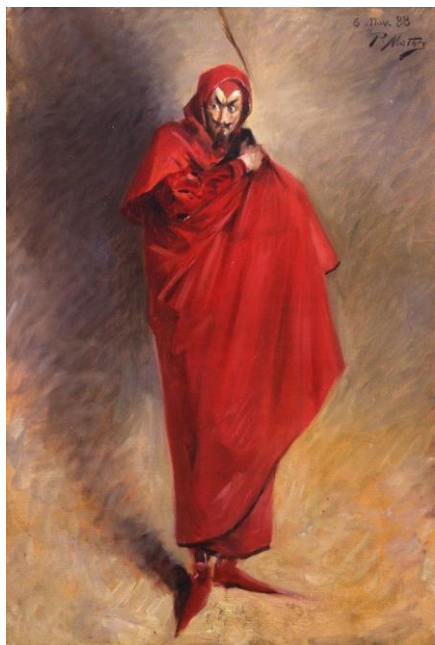
Match the faces of famous opera singers



Farinelli, Kiri Te Kanawa, Maria Callas, Conchita Supervia,
Grace Moore, Feodor Chaliapin, Fanny Persiani,
and Charles Incledon

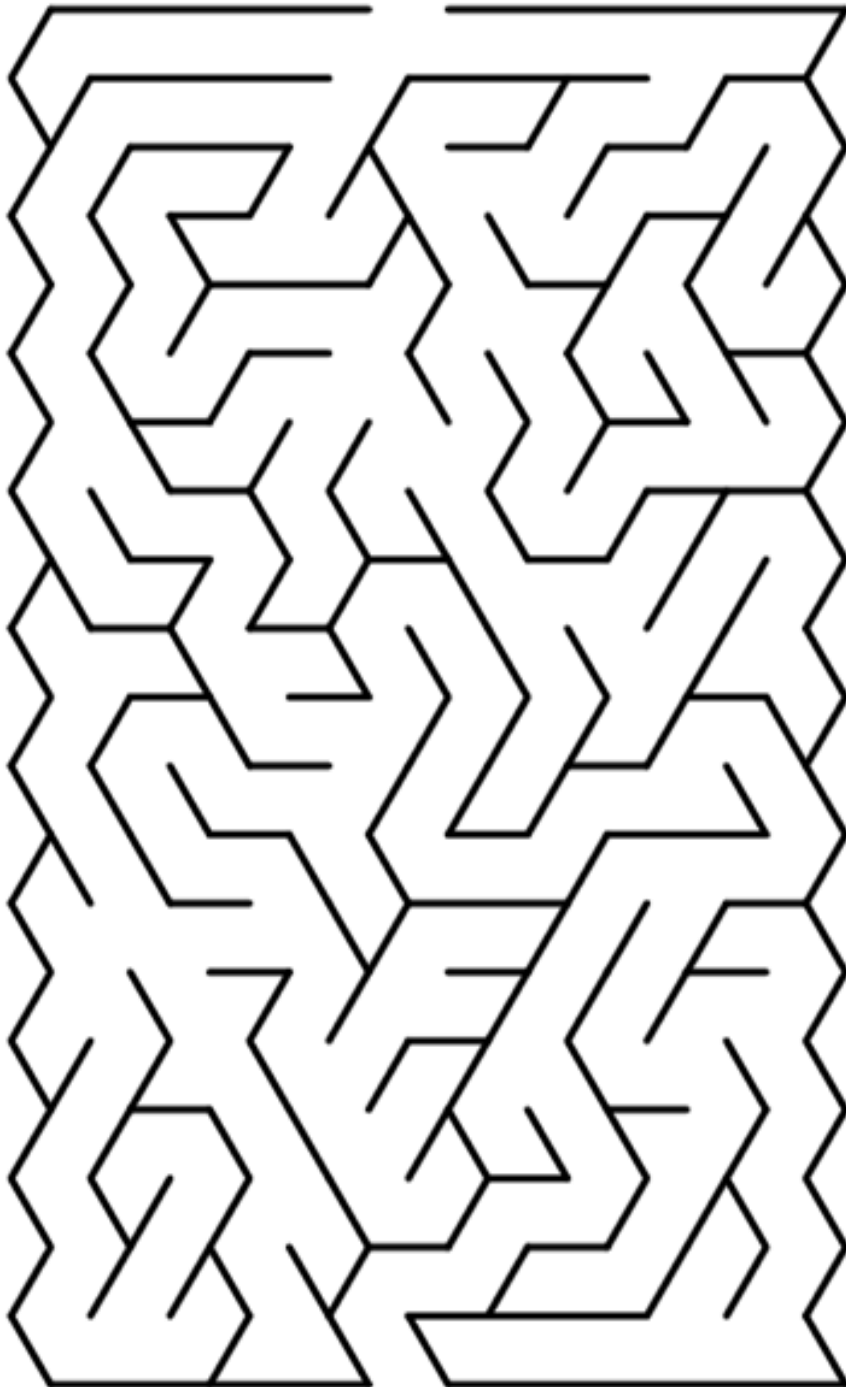
Costumes make the character

Colour in your own version of this costume design.



Lost in the opera house

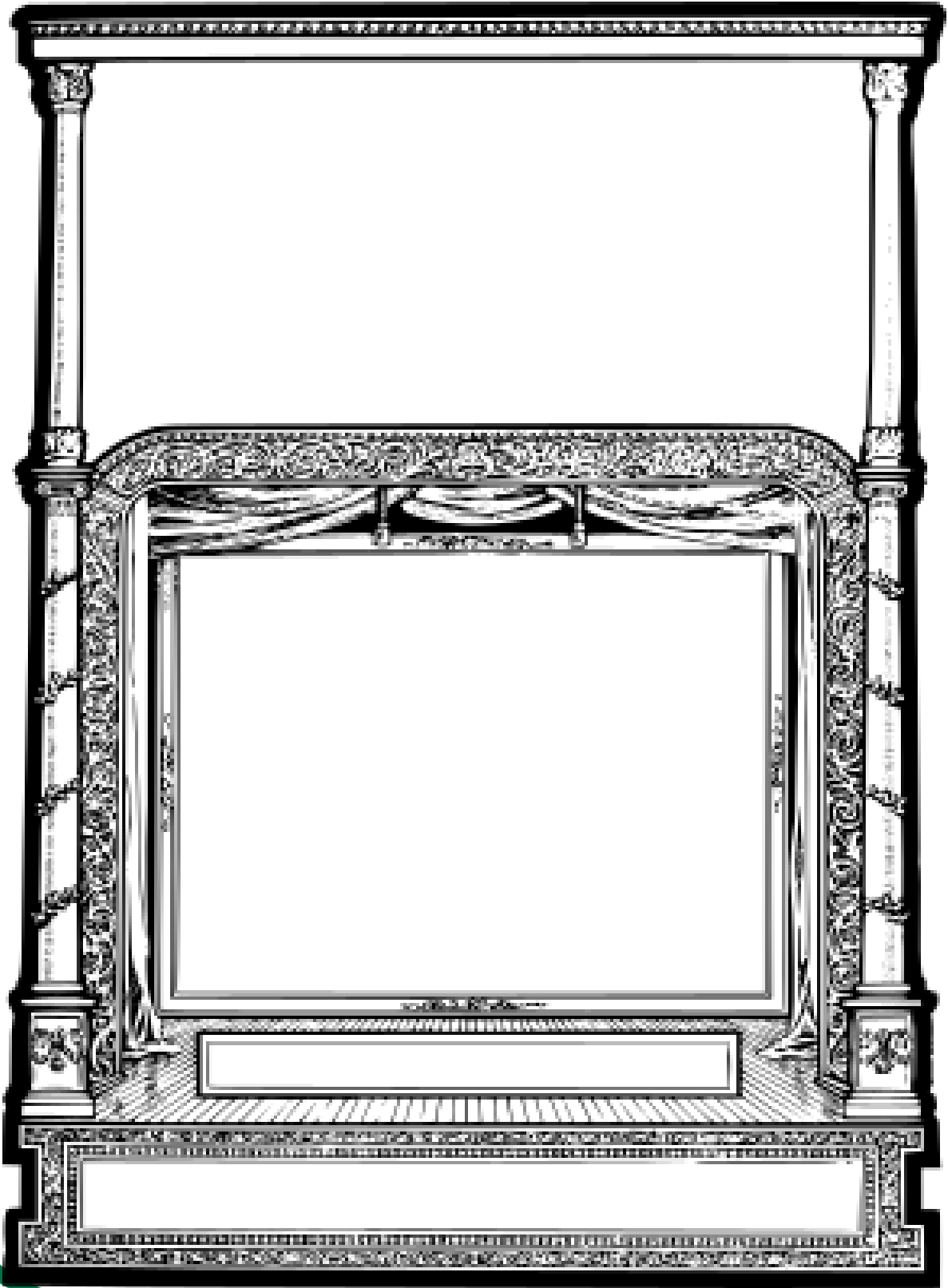
Lotte needs to be on stage soon! Can you help her find the way?
(Solution on final page)



STAGE

Places!

The set, or how the stage looks, is important in setting the scene for the audience. Design your own set below.

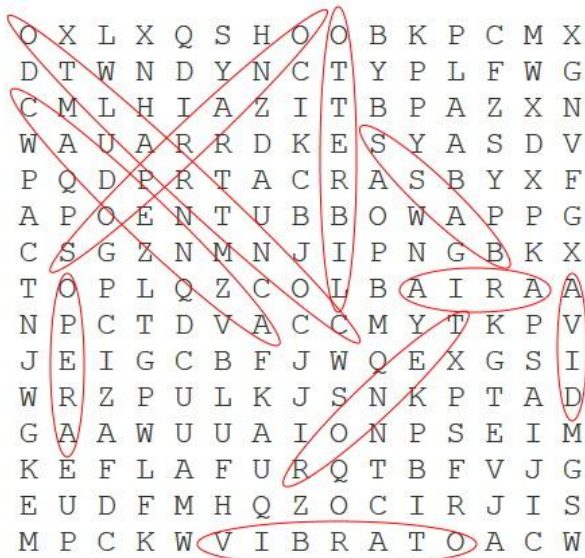


Brava! Brava! Bravissima!

Congratulations, you've completed your Opera Activity Book!
Visit us at www.rcm.ac.uk/museum for more activities and to learn more about our collection.

Solutions:

Find the word



Lost in the opera house

